

TIMBER FRAME INTERIOR WALL SYSTEM – SINGLE STUD



TIMBER STUDS AT 600mm MAX CENTRES  
WITH NOGGINGS AT 1350mm MAX CENTRES

Side 1 1 x 10mm GTEK™ Wall  
Side 2 1 x 10mm GTEK™ Wall

GTEK-T001

FRL	CAVITY WIDTH mm	70	90	120	140
	CAVITY INFILL	Rw/Rw+Ctr			
-/-/-	Nil	31/25	32/26	33/27	33/27
	9kg - 50mm Glasswool	37/28	37/28	38/30	39/32
	30kg - 75mm Glasswool	-	38/29	39/30	39/32
	<b>WALL THICKNESS mm</b>	<b>90</b>	<b>110</b>	<b>140</b>	<b>160</b>



TIMBER STUDS AT 600mm MAX CENTRES  
WITH NOGGINGS AT 1350mm MAX CENTRES

Side 1 1 x 13mm GTEK™ Wall  
Side 2 1 x 13mm GTEK™ Wall

GTEK-T002

FRL	CAVITY WIDTH mm	70	90	120	140
	CAVITY INFILL	Rw/Rw+Ctr			
-/-/-	Nil	34/28	35/30	36/30	37/31
	9kg - 50mm Glasswool	39/32	40/32	41/35	41/35
	30kg - 75mm Glasswool	-	40/32	41/35	41/35
	<b>WALL THICKNESS mm</b>	<b>96</b>	<b>116</b>	<b>146</b>	<b>166</b>



TIMBER STUDS AT 600mm MAX CENTRES  
WITH NOGGINGS AT 1350mm MAX CENTRES

Side 1 2 x 10mm GTEK™ Wall  
Side 2 2 x 10mm GTEK™ Wall

GTEK-T004

FRL	CAVITY WIDTH mm	70	90	120	140
	CAVITY INFILL	Rw/Rw+Ctr			
-/-/-	Nil	39/31	39/33	40/33	41/34
	9kg - 50mm Glasswool	44/36	45/37	45/40	45/40
	30kg - 75mm Glasswool	-	45/38	45/40	46/40
	<b>WALL THICKNESS mm</b>	<b>110</b>	<b>130</b>	<b>160</b>	<b>180</b>

TIMBER FRAME INTERIOR WALL SYSTEM – SINGLE STUD



TIMBER STUDS AT 600mm MAX CENTRES  
WITH NOGGINGS AT 1350mm MAX CENTRES

Side 1 2 x 13mm GTEK™ Wall  
Side 2 2 x 13mm GTEK™ Wall

GTEK-T005

FRL	CAVITY WIDTH mm	70	90	120	140
	CAVITY INFILL	Rw/Rw+Ctr			
-/-/-	Nil	41/35	43/37	43/37	44/37
	9kg - 50mm Glasswool	46/41	47/42	47/42	47/43
	30kg - 75mm Glasswool	-	47/42	47/43	47/43
	<b>WALL THICKNESS mm</b>	<b>122</b>	<b>142</b>	<b>172</b>	<b>192</b>



TIMBER STUDS AT 600mm MAX CENTRES  
WITH NOGGINGS AT 1350mm MAX CENTRES

Side 1 1 x 10mm GTEK™ Sound  
Side 2 1 x 10mm GTEK™ Sound

GTEK-T006

FRL	CAVITY WIDTH mm	70	90	120	140
	CAVITY INFILL	Rw/Rw+Ctr			
-/-/-	Nil	34/29	35/29	35/29	36/30
	9kg - 50mm Glasswool	39/31	39/32	40/35	40/34
	30kg - 75mm Glasswool	-	39/32	40/35	40/35
	<b>WALL THICKNESS mm</b>	<b>90</b>	<b>110</b>	<b>140</b>	<b>160</b>



TIMBER STUDS AT 600mm MAX CENTRES  
WITH NOGGINGS AT 1350mm MAX CENTRES

Side 1 1 x 13mm GTEK™ Sound  
Side 2 1 x 13mm GTEK™ Sound

GTEK-T007

FRL	CAVITY WIDTH mm	70	90	120	140
	CAVITY INFILL	Rw/Rw+Ctr			
-/-/-	Nil	36/31	37/31	38/33	38/33
	9kg - 50mm Glasswool	40/34	40/36	40/37	40/37
	30kg - 75mm Glasswool	-	41/36	41/37	41/38
	<b>WALL THICKNESS mm</b>	<b>96</b>	<b>116</b>	<b>146</b>	<b>166</b>

TIMBER FRAME INTERIOR WALL SYSTEM – SINGLE STUD



TIMBER STUDS AT 600mm MAX CENTRES  
WITH NOGGINGS AT 1350mm MAX CENTRES

Side 1 1 x 10mm GTEK™ Sound  
Side 2 1 x 10mm GTEK™ Wet Area

GTEK-T008

FRL	CAVITY WIDTH mm	70	90	120	140
	CAVITY INFILL	Rw/Rw+Ctr			
-/-/-	Nil	35/29	35/29	36/30	37/30
	9kg - 50mm Glasswool	39/31	40/31	41/35	41/34
	30kg - 75mm Glasswool	-	40/32	41/35	41/35
	<b>WALL THICKNESS mm</b>	<b>90</b>	<b>110</b>	<b>140</b>	<b>160</b>



TIMBER STUDS AT 600mm MAX CENTRES  
WITH NOGGINGS AT 1350mm MAX CENTRES

Side 1 2 x 10mm GTEK™ Sound  
Side 2 2 x 10mm GTEK™ Sound

GTEK-T010

FRL	CAVITY WIDTH mm	70	90	120	140
	CAVITY INFILL	Rw/Rw+Ctr			
-/-/-	Nil	43/37	44/37	44/38	45/39
	9kg - 50mm Glasswool	47/41	48/43	48/44	48/44
	30kg - 75mm Glasswool	-	48/43	48/44	48/44
	<b>WALL THICKNESS mm</b>	<b>110</b>	<b>130</b>	<b>160</b>	<b>180</b>



TIMBER STUDS AT 600mm MAX CENTRES  
WITH NOGGINGS AT 1350mm MAX CENTRES

Side 1 1 x 13mm GTEK™ Fire  
Side 2 1 x 13mm GTEK™ Fire

Previously BGC 005

GTEK-T011

FRL	CAVITY WIDTH mm	70	90	120	140
	CAVITY INFILL	Rw/Rw+Ctr			
-/60/60	Nil	35/30	36/31	37/32	38/33
	9kg - 50mm Glasswool	40/32	41/35	41/36	41/37
	30kg - 75mm Glasswool	-	41/35	41/36	42/37
	<b>WALL THICKNESS mm</b>	<b>96</b>	<b>116</b>	<b>146</b>	<b>166</b>

TIMBER FRAME INTERIOR WALL SYSTEM – SINGLE STUD



TIMBER STUDS AT 600mm MAX CENTRES  
WITH NOGGINGS AT 1350mm MAX CENTRES

Side 1 1 x 13mm GTEK™ Wall  
Side 2 1 x 10mm GTEK™ Wall  
1 x 13mm GTEK™ Fire

GTEK-T015

FRL	CAVITY WIDTH mm	70	90	120	140
	CAVITY INFILL	Rw/Rw+Ctr			
-/-/-	Nil	37/31	37/31	39/33	39/32
	9kg - 50mm Glasswool	41/33	42/36	43/37	43/38
	30kg - 75mm Glasswool	-	42/37	43/38	43/39
	WALL THICKNESS mm	106	126	156	176



TIMBER STUDS AT 600mm MAX CENTRES  
WITH NOGGINGS AT 1350mm MAX CENTRES

Side 1 1 x 16mm GTEK™ Fire  
Side 2 1 x 16mm GTEK™ Fire

GTEK-T019

FRL	CAVITY WIDTH mm	70	90	120	140
	CAVITY INFILL	Rw/Rw+Ctr			
-/180/60 60/60/60	Nil	36/31	37/31	38/33	38/33
	9kg - 50mm Glasswool	40/34	40/36	40/37	40/37
	30kg - 75mm Glasswool	-	41/36	41/37	41/38
	WALL THICKNESS mm	102	122	152	172



TIMBER STUDS AT 600mm MAX CENTRES  
WITH NOGGINGS AT 1350mm MAX CENTRES

Side 1 2 x 13mm GTEK™ Fire  
Side 2 2 x 13mm GTEK™ Fire

GTEK-T021

FRL	CAVITY WIDTH mm	70	90	120	140
	CAVITY INFILL	Rw/Rw+Ctr			
-/180/120 90/90/90	Nil	44/39	44/39	45/40	46/40
	9kg - 50mm Glasswool	48/43	48/44	48/45	48/45
	30kg - 75mm Glasswool	-	48/44	48/45	48/45
	WALL THICKNESS mm	122	142	172	192

TIMBER FRAME INTERIOR WALL SYSTEM – SINGLE STUD



TIMBER STUDS AT 600mm MAX CENTRES  
WITH NOGGINGS AT 1350mm MAX CENTRES

Side 1 2 x 16mm GTEK™ Fire  
Side 2 1 x 16mm GTEK™ Fire

GTEK-T022

FRL	CAVITY WIDTH mm	70	90	120	140
	CAVITY INFILL	Rw/Rw+Ctr			
-/180/90	Nil	40/35	41/37	42/37	42/37
	9kg - 50mm Glasswool	44/39	44/40	44/41	44/41
	30kg - 75mm Glasswool	-	44/41	44/41	44/41
	<b>WALL THICKNESS mm</b>	<b>118</b>	<b>138</b>	<b>168</b>	<b>188</b>



TIMBER STUDS AT 600mm MAX CENTRES  
WITH NOGGINGS AT 1350mm MAX CENTRES

Side 1 2 x 16mm GTEK™ Fire  
Side 2 2 x 16mm GTEK™ Fire

GTEK-T023

FRL	CAVITY WIDTH mm	70	90	120	140
	CAVITY INFILL	Rw/Rw+Ctr			
-/120/120 120/120/120	Nil	45/40	46/40	46/41	47/42
	9kg - 50mm Glasswool	48/45	48/45	48/45	48/45
	30kg - 75mm Glasswool	-	48/45	48/45	48/45
	<b>WALL THICKNESS mm</b>	<b>134</b>	<b>154</b>	<b>184</b>	<b>204</b>



TIMBER STUDS AT 600mm MAX CENTRES  
WITH NOGGINGS AT 1350mm MAX CENTRES

Side 1 3 x 16mm GTEK™ Fire  
Side 2 3 x 16mm GTEK™ Fire

GTEK-T026

FRL	CAVITY WIDTH mm	70	90	120	140
	CAVITY INFILL	Rw/Rw+Ctr			
-/180/180 180/180/180	Nil	50/44	50/45	51/46	51/46
	9kg - 50mm Glasswool	51/49	51/49	51/49	51/49
	30kg - 75mm Glasswool	-	51/49	51/49	51/49
	<b>WALL THICKNESS mm</b>	<b>166</b>	<b>186</b>	<b>216</b>	<b>236</b>

TIMBER FRAME INTERIOR WALL SYSTEM – SINGLE STUD



**TIMBER STUDS AT 600mm MAX CENTRES  
WITH NOGGINGS AT 1350mm MAX CENTRES**

Side 1 1 x 6mm BGC Duraliner™ Plus  
Side 2 1 x 6mm BGC Duraliner™ Plus

**GTEK-T027**

FRL	CAVITY WIDTH mm	70	90	120	140
	CAVITY INFILL	Rw/Rw+Ctr			
-/-/-	Nil	33/26	33/26	34/27	34/27
	9kg - 50mm Glasswool	40/30	41/31	42/34	42/34
	30kg - 75mm Glasswool	-	41/31	43/34	43/34
	<b>WALL THICKNESS mm</b>	<b>82</b>	<b>102</b>	<b>132</b>	<b>152</b>



**TIMBER STUDS AT 600mm MAX CENTRES  
WITH NOGGINGS AT 1350mm MAX CENTRES**

Side 1 1 x 10mm GTEK™ Sound (against stud)  
1 x 6mm BGC Duraliner™ Plus  
Side 2 1 x 10mm GTEK™ Sound (against stud)  
1 x 6mm BGC Duraliner™ Plus

**GTEK-T037**

FRL	CAVITY WIDTH mm	70	90	120	140
	CAVITY INFILL	Rw/Rw+Ctr			
-/-/-	Nil	41/34	42/36	43/36	43/36
	9kg - 50mm Glasswool	46/39	47/41	47/42	47/42
	30kg - 75mm Glasswool	-	47/41	47/42	47/43
	<b>WALL THICKNESS mm</b>	<b>102</b>	<b>122</b>	<b>152</b>	<b>172</b>



**TIMBER STUDS AT 600mm MAX CENTRES  
WITH NOGGINGS AT 1350mm MAX CENTRES**

Side 1 1 x 6mm BGC Duraliner™ Plus (against stud)  
1 x 13mm GTEK™ Fire  
Side 2 1 x 6mm BGC Duraliner™ Plus (against stud)  
1 x 13mm GTEK™ Fire

**GTEK-T039**

FRL	CAVITY WIDTH mm	70	90	120	140
	CAVITY INFILL	Rw/Rw+Ctr			
- /90/90 60/60/60	Nil	42/36	43/37	44/38	44/38
	9kg - 50mm Glasswool	47/41	47/43	48/43	48/44
	30kg - 75mm Glasswool	-	48/43	48/44	48/44
	<b>WALL THICKNESS mm</b>	<b>108</b>	<b>128</b>	<b>158</b>	<b>178</b>

TIMBER FRAME INTERIOR WALL SYSTEM – SINGLE STUD



**TIMBER STUDS AT 600mm MAX CENTRES  
WITH NOGGINGS AT 1350mm MAX CENTRES**  
 Side 1 1 x 6mm BGC Duraliner™ Plus (against stud)  
 1 x 16mm GTEK™ Fire  
 Side 2 1 x 6mm BGC Duraliner™ Plus (against stud)  
 1 x 16mm GTEK™ Fire

**GTEK-T042**

FRL	CAVITY WIDTH mm	70	90	120	140
	CAVITY INFILL	Rw/Rw+Ctr			
-/120/120 90/90/90	Nil	44/39	45/39	46/40	46/40
	9kg - 50mm Glasswool	48/43	48/44	48/45	48/45
	30kg - 75mm Glasswool	-	48/44	48/45	48/45
	<b>WALL THICKNESS mm</b>	<b>114</b>	<b>134</b>	<b>164</b>	<b>184</b>



**TIMBER STUDS AT 600mm MAX CENTRES  
WITH NOGGINGS AT 1350mm MAX CENTRES**  
 Side 1 2 x 16mm GTEK™ Fire & Wet Area  
 Side 2 2 x 16mm GTEK™ Fire & Wet Area

**GTEK-T044**

FRL	CAVITY WIDTH mm	70	90	120	140
	CAVITY INFILL	Rw/Rw+Ctr			
-/180/180	Nil	45/40	46/40	46/41	47/42
	9kg - 50mm Glasswool	48/45	48/45	48/45	48/45
	30kg - 75mm Glasswool	-	48/45	48/45	48/45
	<b>WALL THICKNESS mm</b>	<b>134</b>	<b>154</b>	<b>184</b>	<b>204</b>



**TIMBER STUDS AT 600mm MAX CENTRES  
WITH NOGGINGS AT 1350mm MAX CENTRES**  
 Side 1 1 x 13mm GTEK™ Total Plus  
 Side 2 1 x 13mm GTEK™ Total Plus

**GTEK-E5T001**

FRL	CAVITY WIDTH mm	70	90	120	140
	CAVITY INFILL	Rw/Rw+Ctr			
-/60/60	Nil	36/31	37/31	38/33	38/33
	9kg - 50mm Glasswool	40/34	40/36	40/37	40/37
	11kg - 75mm Glasswool	40/34	40/36	40/37	40/37
	30kg - 75mm Glasswool	40/34	41/36	41/37	41/38
	<b>WALL THICKNESS mm</b>	<b>96</b>	<b>116</b>	<b>146</b>	<b>166</b>

TIMBER FRAME INTERIOR WALL SYSTEM – SINGLE STUD



TIMBER STUDS AT 600mm MAX CENTRES  
WITH NOGGINGS AT 1350mm MAX CENTRES

Side 1  
Side 2 2 x 16mm GTEK™ Fire

GTEK-T046

FRL	CAVITY WIDTH mm	70	90	120	140
	CAVITY INFILL	Rw/Rw+Ctr			
- /60/60 60/60/60	Nil	35/32	-	-	-
	9kg - 50mm Glasswool	-	-	-	-
	30kg - 75mm Glasswool	-	-	-	-
	<b>WALL THICKNESS mm</b>	<b>102</b>	<b>122</b>	<b>152</b>	<b>172</b>



TIMBER STUDS AT 600mm MAX CENTRES  
WITH NOGGINGS AT 1350mm MAX CENTRES

Side 1  
Side 2 3 x 16mm GTEK™ Fire

GTEK-T048

FRL	CAVITY WIDTH mm	70	90	120	140
	CAVITY INFILL	Rw/Rw+Ctr			
120/120/120	Nil	38/36	-	-	-
	9kg - 50mm Glasswool	-	-	-	-
	30kg - 75mm Glasswool	-	-	-	-
	<b>WALL THICKNESS mm</b>	<b>118</b>	<b>138</b>	<b>168</b>	<b>188</b>



TIMBER FRAME INTERIOR WALL SYSTEM – STAGGERED STUD



STAGGERED TIMBER STUDS AT 600mm MAX CENTRES  
MIN 20mm CLEARANCE BETWEEN STUD AND  
OPPOSING WALL LINING

Side 1 1 x 10mm GTEK™ Sound  
Side 2 1 x 10mm GTEK™ Sound

GTEK-TS006

FRL	CAVITY WIDTH mm	90	120	140
	CAVITY INFILL	Rw/Rw+Ctr		
-/-/-	Nil	33/27	34/28	35/29
	9kg - 50mm Glasswool	43/34	45/38	45/37
	30kg - 75mm Glasswool	44/34	46/38	46/38
	<b>WALL THICKNESS mm</b>	<b>110</b>	<b>140</b>	<b>160</b>



STAGGERED TIMBER STUDS AT 600mm MAX CENTRES  
MIN 20mm CLEARANCE BETWEEN STUD AND  
OPPOSING WALL LINING

Side 1 2 x 10mm GTEK™ Sound  
Side 2 2 x 10mm GTEK™ Sound

GTEK-TS010

FRL	CAVITY WIDTH mm	90	120	140
	CAVITY INFILL	Rw/Rw+Ctr		
-/-/-	Nil	42/35	43/36	44/36
	9kg - 50mm Glasswool	52/45	52/46	53/47
	30kg - 75mm Glasswool	52/45	53/47	53/47
	<b>WALL THICKNESS mm</b>	<b>130</b>	<b>160</b>	<b>180</b>



STAGGERED TIMBER STUDS AT 600mm MAX CENTRES  
MIN 20mm CLEARANCE BETWEEN STUD AND  
OPPOSING WALL LINING

Side 1 1 x 13mm GTEK™ Fire  
Side 2 1 x 13mm GTEK™ Fire

GTEK-TS011

FRL	CAVITY WIDTH mm	90	120	140
	CAVITY INFILL	Rw/Rw+Ctr		
-/60/60	Nil	35/29	37/31	37/32
	9kg - 50mm Glasswool	45/37	46/38	46/40
	30kg - 75mm Glasswool	45/37	46/39	47/40
	<b>WALL THICKNESS mm</b>	<b>116</b>	<b>146</b>	<b>166</b>

TIMBER FRAME INTERIOR WALL SYSTEM – STAGGERED STUD



STAGGERED TIMBER STUDS AT 600mm MAX CENTRES  
MIN 20mm CLEARANCE BETWEEN STUD AND  
OPPOSING WALL LINING

Side 1 1 x 16mm GTEK™ Fire  
Side 2 1 x 16mm GTEK™ Fire

GTEK-TS019

FRL	CAVITY WIDTH mm	90	120	140
	CAVITY INFILL	Rw/Rw+Ctr		
-/180/60	Nil	36/30	38/32	38/32
	9kg - 50mm Glasswool	46/39	46/40	46/41
	30kg - 75mm Glasswool	46/39	46/40	47/42
	<b>WALL THICKNESS mm</b>	<b>122</b>	<b>152</b>	<b>172</b>



STAGGERED TIMBER STUDS AT 600mm MAX CENTRES  
MIN 20mm CLEARANCE BETWEEN STUD AND  
OPPOSING WALL LINING

Side 1 2 x 13mm GTEK™ Fire  
Side 2 2 x 13mm GTEK™ Fire

GTEK-TS021

FRL	CAVITY WIDTH mm	90	120	140
	CAVITY INFILL	Rw/Rw+Ctr		
-/180/120	Nil	42/36	43/37	44/37
	9kg - 50mm Glasswool	52/46	53/48	53/48
	30kg - 75mm Glasswool	53/47	53/48	53/49
	<b>WALL THICKNESS mm</b>	<b>142</b>	<b>172</b>	<b>192</b>



STAGGERED TIMBER STUDS AT 600mm MAX CENTRES  
MIN 20mm CLEARANCE BETWEEN STUD AND  
OPPOSING WALL LINING

Side 1 2 x 16mm GTEK™ Fire  
Side 2 2 x 16mm GTEK™ Fire

GTEK-TS023

FRL	CAVITY WIDTH mm	90	120	140
	CAVITY INFILL	Rw/Rw+Ctr		
-/180/120	Nil	43/37	45/38	45/38
	9kg - 50mm Glasswool	53/48	53/49	53/49
	30kg - 75mm Glasswool	53/49	53/50	53/50
	<b>WALL THICKNESS mm</b>	<b>154</b>	<b>184</b>	<b>204</b>

TIMBER FRAME INTERIOR WALL SYSTEM – STAGGERED STUD



STAGGERED TIMBER STUDS AT 600mm MAX CENTRES  
MIN 20mm CLEARANCE BETWEEN STUD AND  
OPPOSING WALL LINING

Side 1 1 x 6mm BGC Duraliner™ Plus  
Side 2 1 x 6mm BGC Duraliner™ Plus

GTEK-TS027

FRL	CAVITY WIDTH mm	90	120	140
	CAVITY INFILL	Rw/Rw+Ctr		
-/-/-	Nil	33/26	33/25	33/26
	9kg - 50mm Glasswool	43/31	45/35	45/35
	30kg - 75mm Glasswool	43/31	45/35	46/35
	<b>WALL THICKNESS mm</b>	<b>102</b>	<b>132</b>	<b>152</b>



STAGGERED TIMBER STUDS AT 600mm MAX CENTRES  
MIN 20mm CLEARANCE BETWEEN STUD AND  
OPPOSING WALL LINING

Side 1 1 x 9mm BGC Duraliner™ Plus  
Side 2 1 x 9mm BGC Duraliner™ Plus

GTEK-TS028

FRL	CAVITY WIDTH mm	90	120	140
	CAVITY INFILL	Rw/Rw+Ctr		
-/-/-	Nil	37/30	39/32	39/31
	9kg - 50mm Glasswool	47/38	48/39	48/40
	30kg - 75mm Glasswool	47/38	48/40	48/40
	<b>WALL THICKNESS mm</b>	<b>108</b>	<b>138</b>	<b>158</b>



STAGGERED TIMBER STUDS AT 600mm MAX CENTRES  
MIN 20mm CLEARANCE BETWEEN STUD AND  
OPPOSING WALL LINING

Side 1 1 x 6mm BGC Duraliner™ Plus  
Side 2 1 x 10mm GTEK™ Wall

GTEK-TS030

FRL	CAVITY WIDTH mm	90	120	140
	CAVITY INFILL	Rw/Rw+Ctr		
-/-/-	Nil	32/25	33/26	33/26
	9kg - 50mm Glasswool	42/31	44/34	45/36
	30kg - 75mm Glasswool	43/31	45/34	46/35
	<b>WALL THICKNESS mm</b>	<b>106</b>	<b>136</b>	<b>156</b>

TIMBER FRAME INTERIOR WALL SYSTEM – STAGGERED STUD



**STAGGERED TIMBER STUDS AT 600mm MAX CENTRES  
MIN 20mm CLEARANCE BETWEEN STUD AND  
OPPOSING WALL LINING**

Side 1 1 x 6mm BGC Duraliner™ Plus  
Side 2 1 x 10mm GTEK™ Sound

**GTEK-TS031**

FRL	CAVITY WIDTH mm	90	120	140
	CAVITY INFILL	Rw/Rw+Ctr		
-/-/-	Nil	33/26	33/26	34/27
	9kg - 50mm Glasswool	43/32	45/36	45/35
	30kg - 75mm Glasswool	43/32	46/36	46/36
	<b>WALL THICKNESS mm</b>	<b>106</b>	<b>136</b>	<b>156</b>



**STAGGERED TIMBER STUDS AT 600mm MAX CENTRES  
MIN 20mm CLEARANCE BETWEEN STUD AND  
OPPOSING WALL LINING**

Side 1 1 x 6mm BGC Duraliner™ Plus (against stud)  
1 x 13mm GTEK™ Fire  
Side 2 1 x 6mm BGC Duraliner™ Plus (against stud)  
1 x 13mm GTEK™ Fire

**GTEK-TS039**

FRL	CAVITY WIDTH mm	90	120	140
	CAVITY INFILL	Rw/Rw+Ctr		
60/60/60	Nil	42/34	43/35	43/36
	9kg - 50mm Glasswool	52/46	53/47	53/47
	30kg - 75mm Glasswool	53/46	53/47	53/47
	<b>WALL THICKNESS mm</b>	<b>128</b>	<b>158</b>	<b>178</b>



**STAGGERED TIMBER STUDS AT 600mm MAX CENTRES  
MIN 20mm CLEARANCE BETWEEN STUD AND  
OPPOSING WALL LINING**

Side 1 1 x 16mm GTEK™ Fire (against stud)  
1 x 6mm BGC Duraliner™ Plus  
Side 2 1 x 16mm GTEK™ Fire (against stud)  
1 x 6mm BGC Duraliner™ Plus

**GTEK-TS040**

FRL	CAVITY WIDTH mm	90	120	140
	CAVITY INFILL	Rw/Rw+Ctr		
60/60/60	Nil	42/34	43/36	44/36
	9kg - 50mm Glasswool	52/46	53/48	53/48
	30kg - 75mm Glasswool	53/47	53/48	53/49
	<b>WALL THICKNESS mm</b>	<b>134</b>	<b>164</b>	<b>184</b>

TIMBER FRAME INTERIOR WALL SYSTEM – STAGGERED STUD



**STAGGERED TIMBER STUDS AT 600mm MAX CENTRES  
MIN 20mm CLEARANCE BETWEEN STUD AND  
OPPOSING WALL LINING**

Side 1 1 x 6mm BGC Duraliner™ Plus (against stud)  
1 x 16mm GTEK™ Fire

Side 2 1 x 6mm BGC Duraliner™ Plus (against stud)  
1 x 16mm GTEK™ Fire

Previously BGC DL004

**GTEK-TS042**

FRL	CAVITY WIDTH mm	90	120	140
	CAVITY INFILL	Rw/Rw+Ctr		
-/120/120 90/90/90	Nil	42/34	43/36	44/36
	9kg - 50mm Glasswool	52/46	53/48	53/48
	30kg - 75mm Glasswool	53/47	53/48	53/49
	<b>WALL THICKNESS mm</b>	<b>134</b>	<b>164</b>	<b>184</b>

TIMBER FRAME INTERIOR WALL SYSTEM – DOUBLE STUD



MIN 20mm GAP BETWEEN STUD WALLS  
 2 ROWS OF TIMBER STUDS AT 600mm MAX CENTRES  
 Side 1 1 x 13mm GTEK™ Fire  
 Side 2 1 x 13mm GTEK™ Fire

GTEK-TD011

FRL	CAVITY WIDTH mm	160	200	260	300
	CAVITY INFILL	Rw/Rw+Ctr			
-/60/60	Nil	40/34	42/35	43/35	44/36
	9kg - 50mm Glasswool - 1 side	52/44	53/45	53/47	53/47
	9kg - 50mm Glasswool - 2 sides	54/45	55/47	55/48	55/49
	30kg - 75mm Glasswool - 1 side	55/45	56/48	56/48	56/49
	30kg - 75mm Glasswool - 2 sides	57/46	58/48	59/49	59/49
	WALL THICKNESS mm	186	226	286	326



MIN 20mm GAP BETWEEN STUD WALLS  
 2 ROWS OF TIMBER STUDS AT 600mm MAX CENTRES  
 Side 1 1 x 13mm GTEK™ Wall (against stud)  
 1 x 13mm GTEK™ Fire  
 Side 2 1 x 13mm GTEK™ Wall (against stud)  
 1 x 13mm GTEK™ Fire

GTEK-TD013

FRL	CAVITY WIDTH mm	160	200	260	300
	CAVITY INFILL	Rw/Rw+Ctr			
-/60/60	Nil	46/37	47/38	48/38	49/39
	9kg - 50mm Glasswool - 1 side	57/48	57/49	58/49	58/51
	9kg - 50mm Glasswool - 2 sides	60/50	61/52	61/53	61/53
	30kg - 75mm Glasswool - 1 side	61/50	61/52	62/54	62/55
	30kg - 75mm Glasswool - 2 sides	63/52	64/54	65/55	65/55
	WALL THICKNESS mm	212	252	312	352



MIN 20mm GAP BETWEEN STUD WALLS  
 2 ROWS OF TIMBER STUDS AT 600mm MAX CENTRES  
 Side 1 1 x 10mm GTEK™ Wall (against stud)  
 1 x 16mm GTEK™ Fire  
 Side 2 1 x 10mm GTEK™ Wall (against stud)  
 1 x 16mm GTEK™ Fire

GTEK-TD017

FRL	CAVITY WIDTH mm	160	200	260	300
	CAVITY INFILL	Rw/Rw+Ctr			
-/180/60	Nil	46/38	47/39	48/39	49/40
	9kg - 50mm Glasswool - 1 side	57/49	58/49	58/49	58/51
	9kg - 50mm Glasswool - 2 sides	60/51	61/52	61/53	61/53
	30kg - 75mm Glasswool - 1 side	61/51	62/53	63/54	63/55
	30kg - 75mm Glasswool - 2 sides	63/52	64/54	65/55	65/55
	WALL THICKNESS mm	212	252	312	352

TIMBER FRAME INTERIOR WALL SYSTEM – DOUBLE STUD



MIN 20mm GAP BETWEEN STUD WALLS  
 2 ROWS OF TIMBER STUDS AT 600mm MAX CENTRES  
 Side 1 1 x 16mm GTEK™ Fire  
 Side 2 1 x 16mm GTEK™ Fire

GTEK-TD019

FRL	CAVITY WIDTH mm	160	200	260	300
	CAVITY INFILL	Rw/Rw+Ctr			
-/180/60 60/60/60	Nil	42/35	43/36	45/37	45/37
	9kg - 50mm Glasswool - 1 side	54/46	55/48	55/49	55/49
	9kg - 50mm Glasswool - 2 sides	56/48	57/49	57/49	57/50
	30kg - 75mm Glasswool - 1 side	57/48	58/49	58/49	58/51
	30kg - 75mm Glasswool - 2 sides	59/48	60/49	61/50	61/51
	<b>WALL THICKNESS mm</b>	<b>192</b>	<b>232</b>	<b>292</b>	<b>332</b>



MIN 20mm GAP BETWEEN STUD WALLS  
 2 ROWS OF TIMBER STUDS AT 600mm MAX CENTRES  
 Side 1 2 x 13mm GTEK™ Fire  
 Side 2 2 x 13mm GTEK™ Fire

GTEK-TD021

FRL	CAVITY WIDTH mm	160	200	260	300
	CAVITY INFILL	Rw/Rw+Ctr			
-/180/120 90/90/90	Nil	48/40	50/41	51/43	52/43
	9kg - 50mm Glasswool - 1 side	60/51	60/53	61/55	61/55
	9kg - 50mm Glasswool - 2 sides	62/53	63/55	63/56	63/57
	30kg - 75mm Glasswool - 1 side	63/53	64/55	64/56	64/57
	30kg - 75mm Glasswool - 2 sides	65/54	65/55	66/57	66/58
	<b>WALL THICKNESS mm</b>	<b>212</b>	<b>252</b>	<b>312</b>	<b>352</b>



MIN 20mm GAP BETWEEN STUD WALLS  
 2 ROWS OF TIMBER STUDS AT 600mm MAX CENTRES  
 Side 1 2 x 16mm GTEK™ Fire  
 Side 2 2 x 16mm GTEK™ Fire

GTEK-TD023

FRL	CAVITY WIDTH mm	160	200	260	300
	CAVITY INFILL	Rw/Rw+Ctr			
-/180/120 120/120/120	Nil	48/39	49/41	51/42	52/43
	9kg - 50mm Glasswool - 1 side	60/52	61/54	61/55	61/56
	9kg - 50mm Glasswool - 2 sides	62/54	63/55	64/57	64/57
	30kg - 75mm Glasswool - 1 side	63/54	64/56	65/57	65/58
	30kg - 75mm Glasswool - 2 sides	65/54	66/57	67/58	67/59
	<b>WALL THICKNESS mm</b>	<b>224</b>	<b>264</b>	<b>324</b>	<b>364</b>

TIMBER FRAME INTERIOR WALL SYSTEM – DOUBLE STUD



MIN 20mm GAP BETWEEN STUD WALLS  
 2 ROWS OF TIMBER STUDS AT 600mm MAX CENTRES  
 Side 1 3 x 16mm GTEK™ Fire  
 Side 2 3 x 16mm GTEK™ Fire

GTEK-TD026

FRL	CAVITY WIDTH mm	160	200	260	300
	CAVITY INFILL	Rw/Rw+Ctr			
-/180/180	Nil	54/45	56/46	58/48	59/49
	9kg - 50mm Glasswool - 1 side	67/59	68/61	69/62	69/63
	9kg - 50mm Glasswool - 2 sides	69/61	70/62	71/64	71/65
	30kg - 75mm Glasswool - 1 side	70/61	71/63	72/64	72/65
	30kg - 75mm Glasswool - 2 sides	72/61	73/63	73/65	73/65
	WALL THICKNESS mm	256	296	356	396



MIN 20mm GAP BETWEEN STUD WALLS  
 2 ROWS OF TIMBER STUDS AT 600mm MAX CENTRES  
 Side 1 1 x 6mm BGC Duraliner™ Plus  
 Side 2 1 x 6mm BGC Duraliner™ Plus

GTEK-TD027

FRL	CAVITY WIDTH mm	160	200	260	300
	CAVITY INFILL	Rw/Rw+Ctr			
-/-/-	Nil	38/30	38/31	39/32	40/32
	9kg - 50mm Glasswool - 1 side	51/41	51/43	52/44	52/45
	9kg - 50mm Glasswool - 2 sides	52/42	53/45	54/46	54/46
	30kg - 75mm Glasswool - 1 side	53/42	54/45	55/47	55/47
	30kg - 75mm Glasswool - 2 sides	55/43	56/46	57/48	57/49
	WALL THICKNESS mm	172	212	272	312



MIN 20mm GAP BETWEEN STUD WALLS  
 2 ROWS OF TIMBER STUDS AT 600mm MAX CENTRES  
 Side 1 1 x 9mm BGC Duraliner™ Plus  
 Side 2 1 x 9mm BGC Duraliner™ Plus

GTEK-TD028

FRL	CAVITY WIDTH mm	160	200	260	300
	CAVITY INFILL	Rw/Rw+Ctr			
-/-/-	Nil	42/34	43/35	44/36	45/36
	9kg - 50mm Glasswool - 1 side	55/45	55/46	56/48	56/48
	9kg - 50mm Glasswool - 2 sides	56/46	57/48	58/49	58/50
	30kg - 75mm Glasswool - 1 side	58/47	58/49	58/49	58/51
	30kg - 75mm Glasswool - 2 sides	59/47	60/49	61/49	61/52
	WALL THICKNESS mm	178	218	278	318



TIMBER FRAME INTERIOR WALL SYSTEM – DOUBLE STUD



**MIN 20mm GAP BETWEEN STUD WALLS**  
**2 ROWS OF TIMBER STUDS AT 600mm MAX CENTRES**  
 Side 1 1 x 6mm BGC Duraliner™ Plus (against studs)  
 1 x 13mm GTEK™ Fire  
 Side 2 1 x 6mm BGC Duraliner™ Plus (against studs)  
 1 x 13mm GTEK™ Fire

Previously BGC DL003

**GTEK-TD039**

FRL	CAVITY WIDTH mm	160	200	260	300
	CAVITY INFILL	Rw/Rw+Ctr			
60/60/60	Nil	46/38	47/39	48/39	49/40
	9kg - 50mm Glasswool - 1 side	58/49	59/49	59/49	59/51
	9kg - 50mm Glasswool - 2 sides	60/50	60/52	61/53	61/53
	30kg - 75mm Glasswool - 1 side	61/51	62/53	63/54	63/54
	30kg - 75mm Glasswool - 2 sides	63/52	64/53	65/55	65/55
	<b>WALL THICKNESS mm</b>	<b>198</b>	<b>238</b>	<b>298</b>	<b>338</b>



**MIN 20mm GAP BETWEEN STUD WALLS**  
**2 ROWS OF TIMBER STUDS AT 600mm MAX CENTRES**  
 Side 1 1 x 16mm GTEK™ Fire (against stud)  
 1 x 6mm BGC Duraliner™ Plus  
 Side 2 1 x 16mm GTEK™ Fire (against stud)  
 1 x 6mm BGC Duraliner™ Plus

**GTEK-TD040**

FRL	CAVITY WIDTH mm	160	200	260	300
	CAVITY INFILL	Rw/Rw+Ctr			
60/60/60	Nil	48/39	49/40	51/41	52/42
	9kg - 50mm Glasswool - 1 side	60/51	61/53	61/54	61/55
	9kg - 50mm Glasswool - 2 sides	62/53	63/54	63/56	63/57
	30kg - 75mm Glasswool - 1 side	63/53	64/54	64/56	64/57
	30kg - 75mm Glasswool - 2 sides	65/53	65/55	66/57	66/58
	<b>WALL THICKNESS mm</b>	<b>204</b>	<b>244</b>	<b>304</b>	<b>344</b>



**MIN 20mm GAP BETWEEN STUD WALLS**  
**2 ROWS OF TIMBER STUDS AT 600mm MAX CENTRES**  
 Side 1 1 x 6mm BGC Duraliner™ Plus (against studs)  
 1 x 16mm GTEK™ Fire  
 Side 2 1 x 6mm BGC Duraliner™ Plus (against studs)  
 1 x 16mm GTEK™ Fire

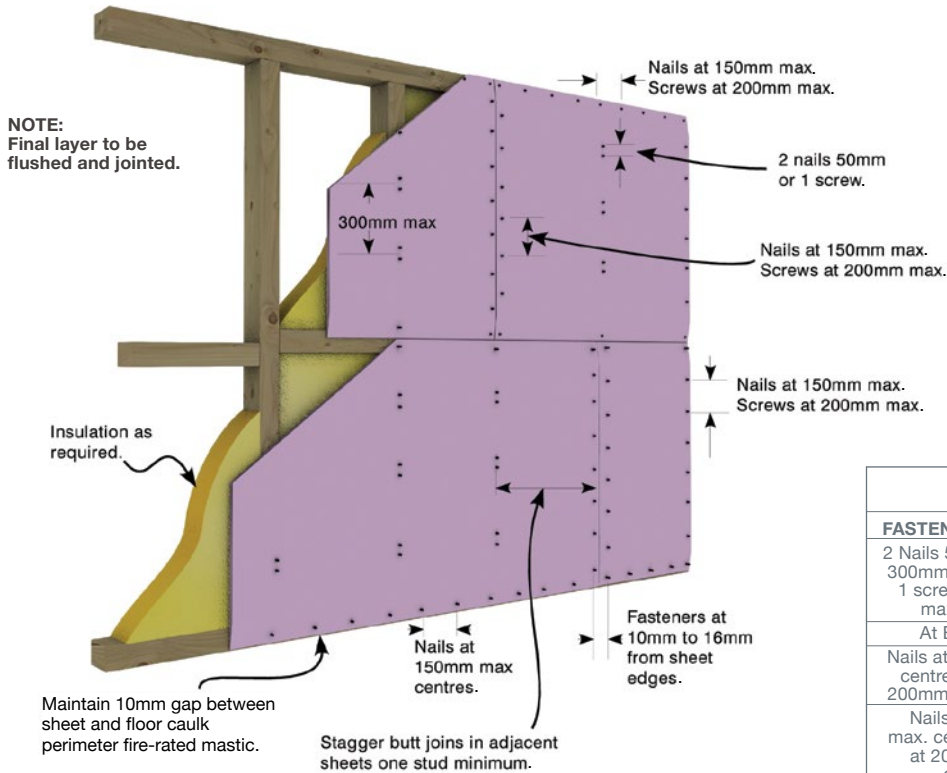
Previously BGC DL004

**GTEK-TD042**

FRL	CAVITY WIDTH mm	160	200	260	300
	CAVITY INFILL	Rw/Rw+Ctr			
90/90/90	Nil	48/39	49/40	51/41	52/42
	9kg - 50mm Glasswool - 1 side	60/51	61/53	61/54	61/55
	9kg - 50mm Glasswool - 2 sides	62/53	63/54	63/56	63/57
	30kg - 75mm Glasswool - 1 side	63/53	64/54	64/56	64/57
	30kg - 75mm Glasswool - 2 sides	65/53	65/55	66/57	66/58
	<b>WALL THICKNESS mm</b>	<b>204</b>	<b>244</b>	<b>304</b>	<b>344</b>

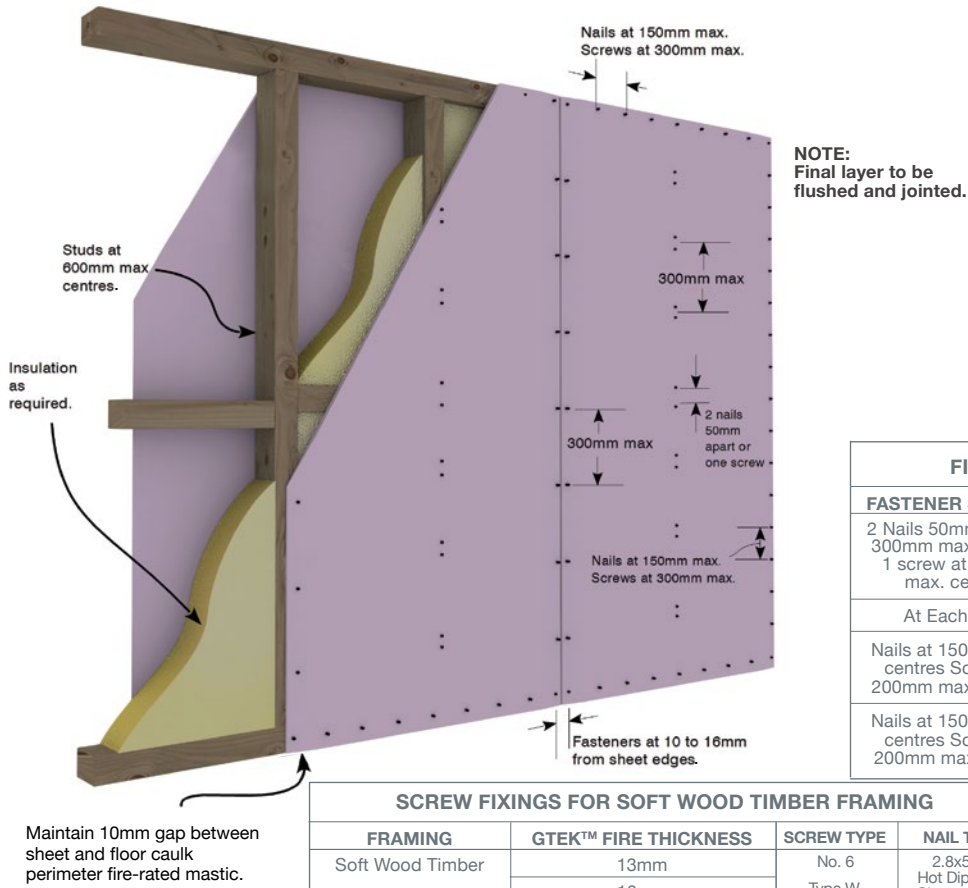
INSTALLATION DETAILS - TIMBER STUD

TIMBER FRAME WITH ONE LAYER GTEK™ FIRE - HORIZONTAL SHEETING



FIXING SPECIFICATIONS	
FASTENER SPACING	LOCATION
2 Nails 50mm apart at 300mm max. centres 1 screw at 200mm max. centres	Centre of the Board
At Each Stud	Recessed Edges
Nails at 150mm max. centres Screws at 200mm max. centres	Butt Joints
Nails at 150mm max. centres Screws at 200mm max. centres	Corners, openings and edges

TIMBER FRAME WITH ONE LAYER GTEK™ FIRE - VERTICAL SHEETING

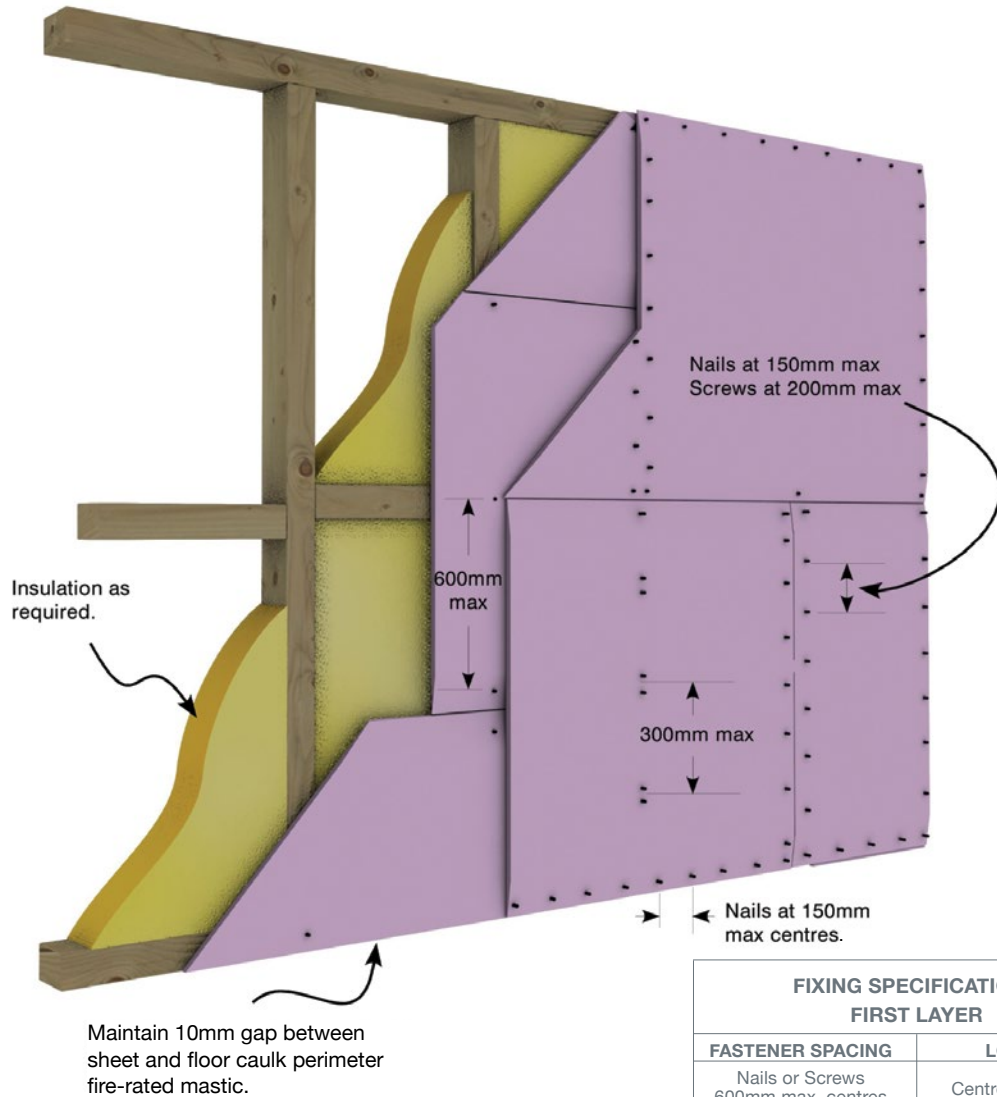


FIXING SPECIFICATIONS	
FASTENER SPACING	LOCATION
2 Nails 50mm apart at 300mm max. centres 1 screw at 300mm max. centres	Centre of the Board
At Each Stud	Recessed Edges
Nails at 150mm max. centres Screws at 200mm max. centres	Butt Joints
Nails at 150mm max. centres Screws at 200mm max. centres	Corners, openings and edges

SCREW FIXINGS FOR SOFT WOOD TIMBER FRAMING				SCREW LENGTH
FRAMING	GTEK™ FIRE THICKNESS	SCREW TYPE	NAIL TYPE	1ST LAYER
Soft Wood Timber	13mm	No. 6	2.8x50mm	32mm
	16mm	Type W	Hot Dipped Gal Clouts or equal	45mm

INSTALLATION DETAILS - TIMBER STUD

TIMBER FRAME WITH TWO LAYERS GTEK™ FIRE - HORIZONTAL SHEETING

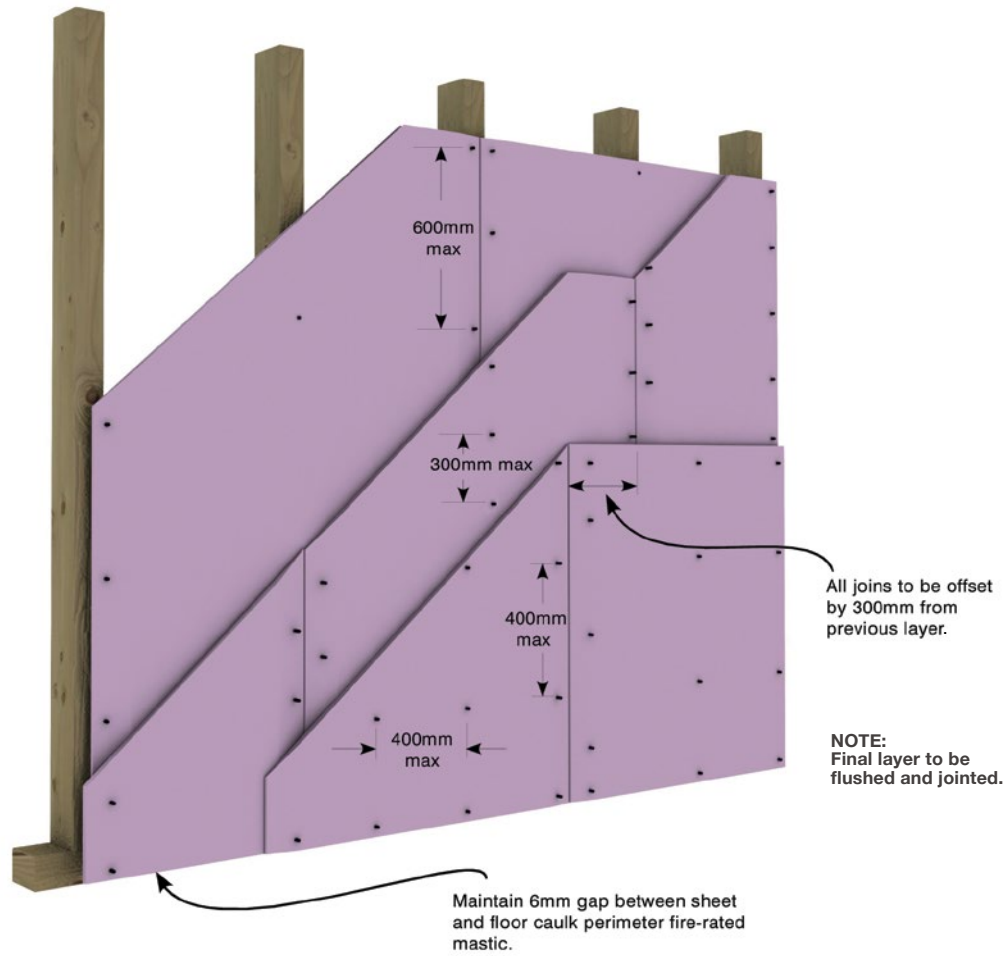


FIXING SPECIFICATIONS FIRST LAYER	
FASTENER SPACING	LOCATION
Nails or Screws 600mm max. centres	Centre of the Board
Nails or Screws at each stud	Recessed Edges
Nails or Screws 600mm max. centres in staggered pattern	Butt Joints
SECOND LAYER	
2 Nails 50mm apart at 300mm max. centres 1 screw at 200mm max. centres	Centre of the Board
Nails or screws at each stud	Recessed Edges
Nails at 150mm max. centres Screws at 200mm max. centres	Butt Joints on noggins
Nails at 150mm max. centres Screws at 300mm max. centres	Corners, openings and perimeter

SCREW FIXINGS FOR SOFT WOOD TIMBER FRAMING			SCREW/NAIL LENGTH	
FRAMING	GTEK™ FIRE THICKNESS	SCREW/NAIL TYPE	1ST LAYER	2ND LAYER
Soft Wood Timber	13mm	No 6 Type W	32mm	50mm
	16mm	No 6 Type W	45mm	65mm
	13mm/16mm	2.8 Hot Dip Gal Clout	50mm	65mm

INSTALLATION DETAILS - TIMBER STUD

TIMBER FRAME WITH THREE LAYERS GTEK™ FIRE - VERTICAL SHEETING



**FIXING SPECIFICATIONS  
THREE LAYER HORIZONTAL  
FIRST LAYER**

FASTENER SPACING	LOCATION
600mm max. centres	Centre of the Board
Fasteners at each stud	Recessed Edges
600mm max. centres	Corners & Openings

**SECOND LAYER**

1 scw at 200mm max. centres	Centre of the Board
Fasteners at each stud	Recessed Edges
Screws 200mm max centres	Butt Joints

**THIRD LAYER**

Laminating Screws at 400mm max. grid	Centre of the Board
	Recessed Edges
	Corners & Openings
Laminating Screws 400mm max. centres	Butt Joints

**FIXING SPECIFICATIONS THREE LAYER  
VERTICAL-VERTICAL SHEETING (Shown)  
FIRST LAYER**

FASTENER SPACING	LOCATION
600mm max. centres	Centre of the Board
600mm max. centres	Recessed Edges
600mm max. centres	Corners & Openings

**SECOND LAYER**

1 scw at 300mm max. centres	Centre of the Board
300mm max. centres	Recessed Edges
Laminating Screws 200mm max. centres	Butt Joints
Screws 150mm max 300mm max. centres	Corners & Openings

**THIRD LAYER**

Laminating Screws at 400mm max. grid	Centre of the Board
	Recessed Edges
	Corners & Openings
Laminating Screws 200mm max. centres	Butt Joints

**SCREW FIXINGS FOR SOFT WOOD TIMBER FRAMING**

FRAMING	GTEK™ FIRE THICKNESS	SCREW	NAIL	SCREW/NAIL LENGTH		
				1ST LAYER	2ND LAYER	3RD LAYER
Soft Wood Timber	13mm	No. 6 Type W	2.8x50mm Hot Dipped Gal Clouts or equal	32mm	50mm	50mm
	16mm			45mm	65mm	65mm
	13mm/16mm			50mm	65mm	65mm