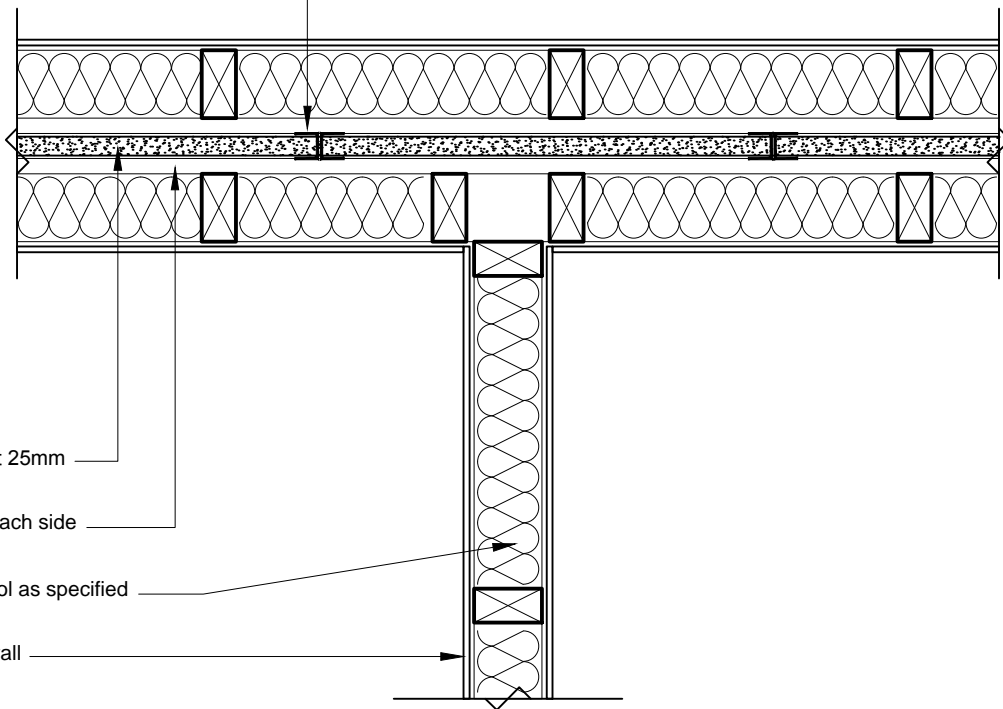


Opposing GTEK™ Protect Aluminium Clips
@ each GTEK™ Protect H Stud



GTEK™ Protect 25mm

20-40mm gap each side

90mm Glasswool as specified

Non fire-rated wall

Note:

- 1) Refer to GTEK™ Protect Systems Components table for insulation and wall linings.
- 2) Ensure all gaps are sealed with Firemastic sealant.



Profile GTEK™ PROTECT
Detail INTERNAL WALL

Date Feb 2017
Scale 1:10
Detail No. PRO_28